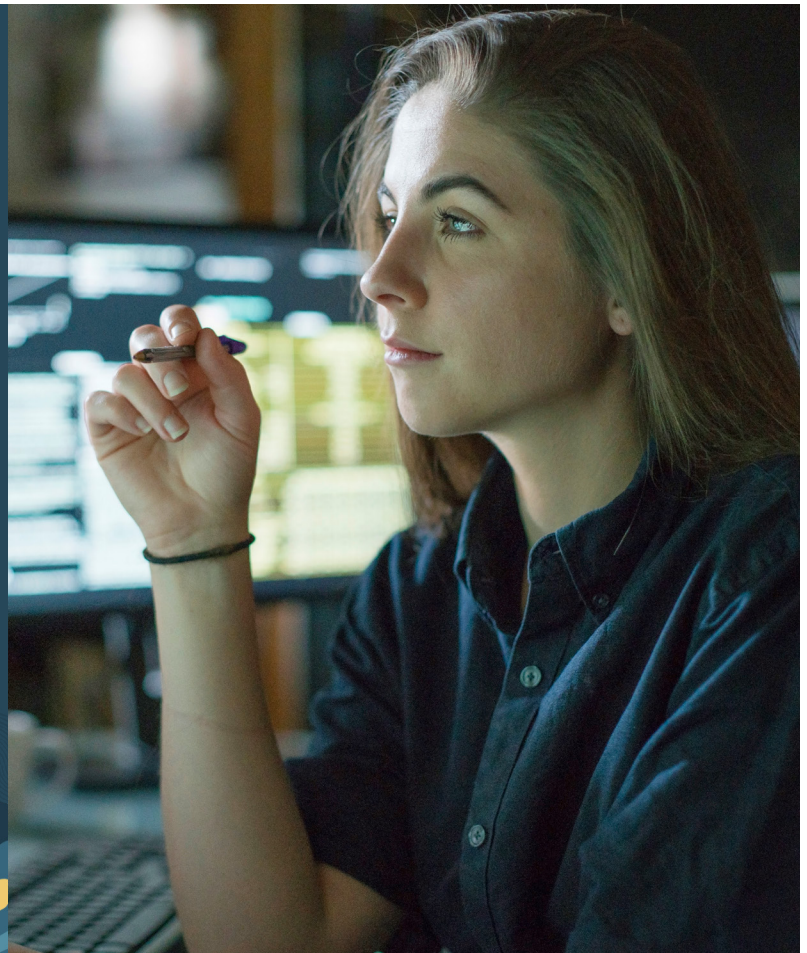




Essential Metrics and Reports to  
Run Your Business

## NetSuite SuiteAnalytics



Correct and well-timed analytics are the basis of any important business decision. They enable business users to keep an eye on the business, recognize trends, and work towards the best possible outcomes. With the right metrics, leaders can be confident the choices they make are substantiated by accurate and timely information. NetSuite SuiteAnalytics is an embedded analytics solution providing real-time business intelligence. With a variety of tools for business users, including saved searches, workbooks, reports, key performance indicators, and dashboards, SuiteAnalytics provides the visibility into financial and operational performance across all business functions to help you run your business better.

### Key Benefits

- Real-time transparency into company performance across all business functions, from summary level to transaction level.
- Slice and dice data, then visualize results in a way that is easier to consume and understand.
- Easy to use analytic tools without requiring programming or technical resources.
- Join NetSuite data with other data sources with NetSuite Analytics Warehouse.

## SuiteAnalytics Saved Search

Saved Search is a fast and easy query tool to answer all sorts of business questions, like the number of outstanding vendor bills per period. It provides lists of real-time results based on user-applied criteria and can be updated with a single click. Frequently used saved searches can be embedded in the NetSuite dashboard for quick access, and they can be automated to share with others on a scheduled interval. Saved search results can be exported in Excel, CSV, and PDF formats.

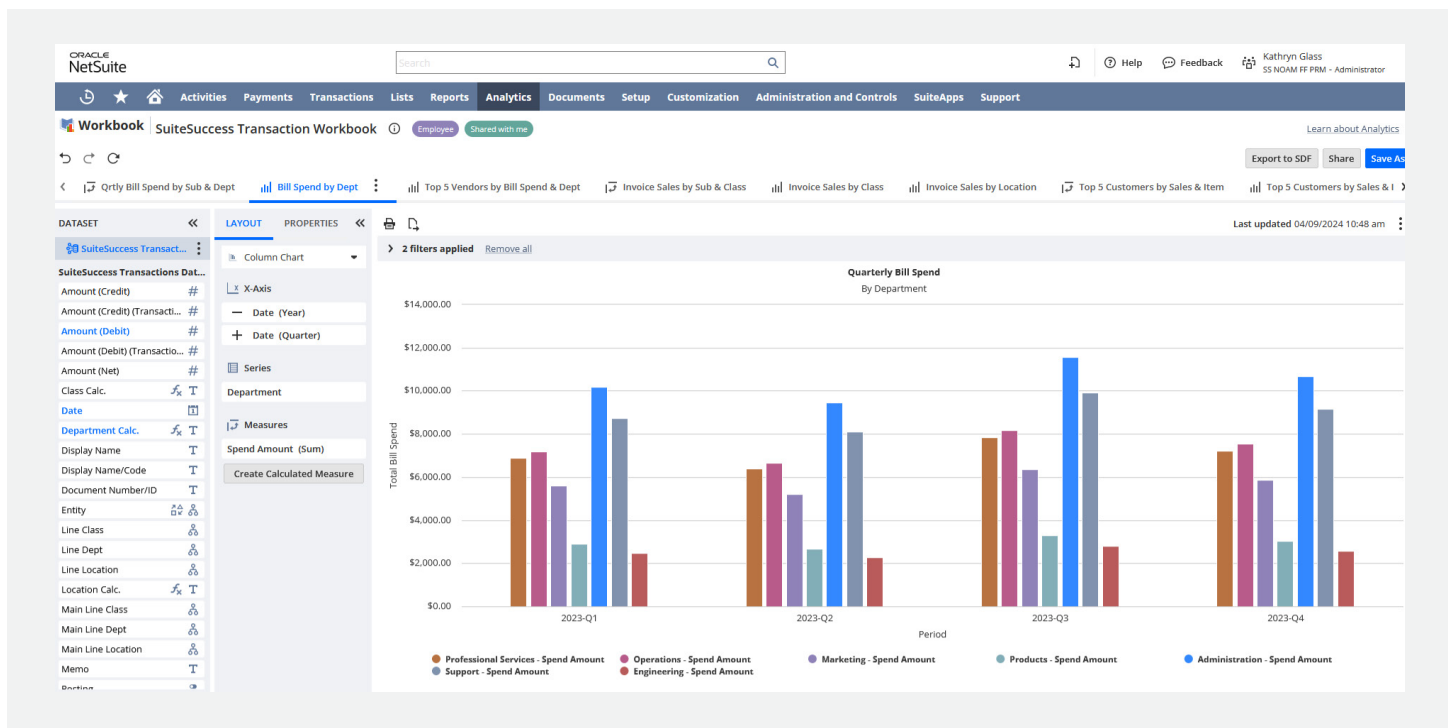
## SuiteAnalytics Workbook

Workbooks offer more advanced query capabilities to explore and analyze financial and operational data. Data can be analyzed in simple table view or across multiple dimensions in pivot tables and charts. These can be saved for future use, shared, or embedded in a NetSuite dashboard. Features include:

- **Datasets** are the foundation of workbook visualizations. Users can create datasets or quickly apply the prebuilt collection for domain specific analytics. Datasets can be

shared and reused across multiple workbooks, and they can be linked by a common field to enhance visibility into areas of interest.

- **Pivot Tables** are a tool to calculate, summarize, and analyze data for use cases like comparing performance over time and identifying patterns in business activity. Advanced customizations such as conditional formatting and filtering enable deeper views. And, as analyses become more complex and time sensitive, users have the option of choosing between real-time or cached data.
- **Charts** present business data visually using the collection of chart types for fast identification of trends and anomalies, with easy drill downs to the NetSuite transaction record.
- **Workbook Templates** speed up data insights with predefined table views, pivot tables, and charts. These can be customized to your needs.



## SuiteAnalytics Reports

SuiteAnalytics provides a collection of templates for GAAP compliant reporting and for commonly used financial and operational reporting, including the A/P Aging Report and Sales Orders by Item. In addition, Report Snapshots provide high-level summary information, like Top 5 Customers by Balance. All reports can be easily modified, and custom reports can be created using the array of analytic tools provided within the platform. Frequently used reports and snapshots can be embedded in a dashboard for drill down access to the NetSuite transaction record. And reports can be shared with members across the organization in a variety of formats and according to an automated schedule.

## SuiteAnalytics KPIs

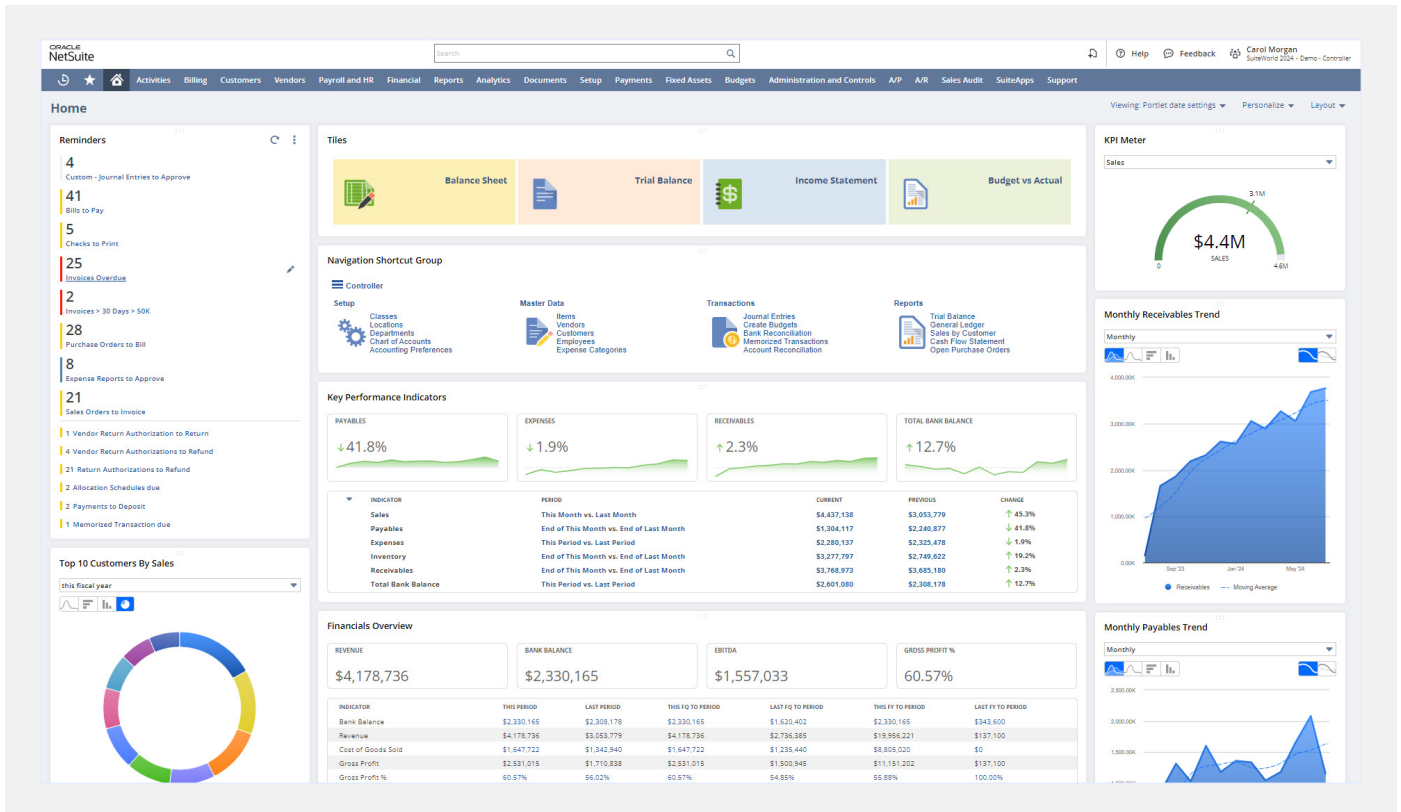
Key Performance Indicators (KPIs) highlight variances and trends in business performance as they happen. KPI Meters graphically display key metrics so it's easy to monitor. Both come as a prepacked collection of metrics that can be easily positioned on the dashboard and customized to your preference.

## SuiteAnalytics Dashboard

Real-time dashboards enable comprehensive business visibility from all areas of the company, from accounting and sales to fulfillment and support. The prebuilt collection of role-based dashboards provides job-essential information that reduces blind spots created by spreadsheets and disconnected operating systems. Dashboards can be easily customized to support the unique business needs of your company.

## SuiteAnalytics Connect

SuiteAnalytics Connect provides the ability to archive, analyze, and report on NetSuite data using a third-party tool or custom-built application on devices with Windows, Linux, or OS X operating systems. SuiteAnalytics Connect provides ODBC, JDBC, and ADO.NET drivers for connectivity to a variety of applications, including Microsoft Excel, BIRST, Oracle Analytics Cloud, and NetSuite Analytics Warehouse.





@wenable we don't just implement ERP Systems - we help businesses evolve

# Adaptability has never been more important



Choosing the right ERP solution is critical. But choosing the right implementation partner is what defines success. Wenable brings together deep domain expertise, a customer-first mindset, and a relentless focus on outcomes to help businesses unlock the full potential of NetSuite.

Need an ERP implementation partner? Please reach out to us at [erp@wenable.com](mailto:erp@wenable.com)

**wenable**

8<sup>th</sup> Floor, Sohini Tech Park, Financial District,  
Nanakramguda, Hyderabad, Telangana, India -500032

